

Thermography Inspection Report

Company	Tools InAction Test
Author	DM
Date	10/16/2012

General Comments

Contents

Description	Page No.
Inspection 1	3
Inspection 2	4
Inspection 3	5
Inspection 4	6
Inspection 5	7
Inspection 6	8
Inspection 7	9
Inspection 8	10
Inspection 9	11
Inspection 10	12
Inspection 11	13
Inspection 12	14
Summary	15

Inspection 1

Repair Priority
1 Low to 5 High

--

Operator	
Location	
Equipment	

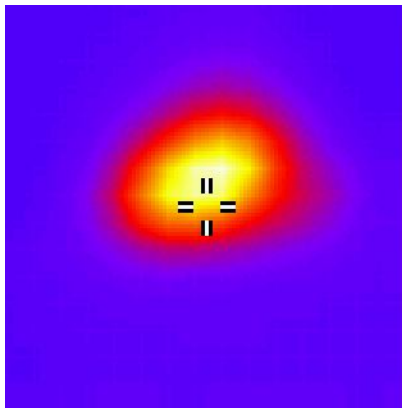
Snapshot

Date	2nd October 2012
Time	19.36

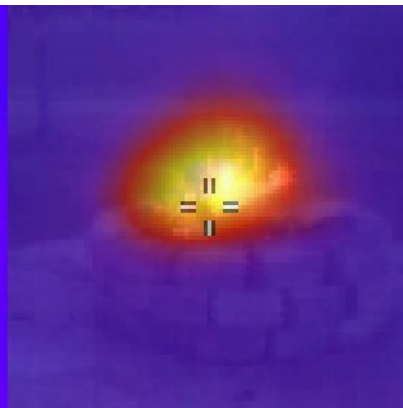
Comment

--

Thermal Snapshot



Thermal and Visible Blend



Visible Image



Temperature Measurements

Cursor 1	352.2 °F
----------	----------

Measurement Parameters

Emissivity:	0.95
Reflected Temp:	67.9 °F
Measured Load	
Rated Load	
Load %	

Repair Action

Action	Date	Initials
Inspected		
Repaired		
Reinspected		

Fault / Recommended Action

--

Inspection 2

Repair Priority
1 Low to 5 High

--

Operator	
Location	
Equipment	

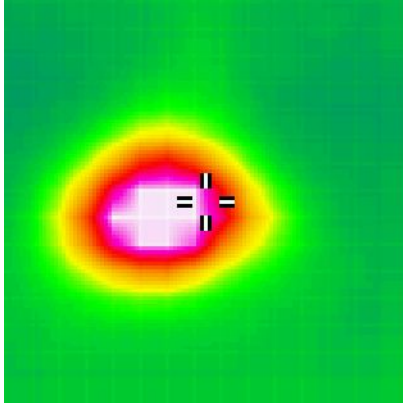
Snapshot

Date	2nd October 2012
Time	19.40

Comment

--

Thermal Snapshot



Thermal and Visible Blend



Visible Image



Temperature Measurements

Cursor 1	341.0 °F
----------	----------

Measurement Parameters

Emissivity:	0.95
Reflected Temp:	67.9 °F
Measured Load	
Rated Load	
Load %	

Repair Action

Action	Date	Initials
Inspected		
Repaired		
Reinspected		

Fault / Recommended Action

--

Inspection 3

Repair Priority
1 Low to 5 High

--

Operator	
Location	
Equipment	

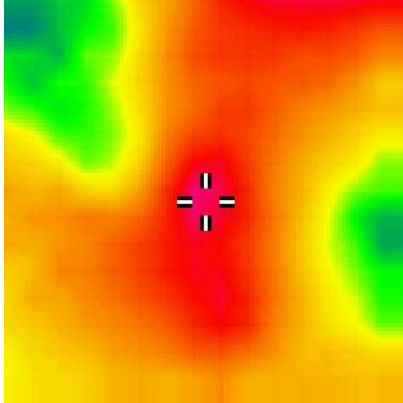
Snapshot

Date	2nd October 2012
Time	19.41

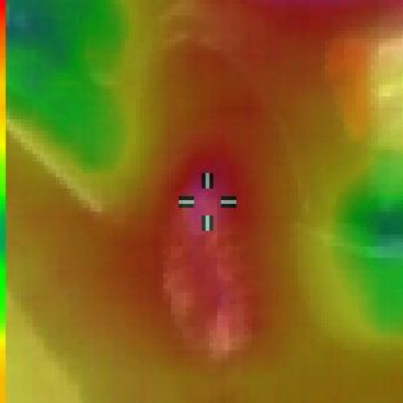
Comment

--

Thermal Snapshot



Thermal and Visible Blend



Visible Image



Temperature Measurements

Cursor 1	73.4 °F
----------	---------

Measurement Parameters

Emissivity:	0.95
Reflected Temp:	67.9 °F
Measured Load	
Rated Load	
Load %	

Repair Action

Action	Date	Initials
Inspected		
Repaired		
Reinspected		

Fault / Recommended Action

--

Inspection 4

Repair Priority
1 Low to 5 High

--

Operator	
Location	
Equipment	

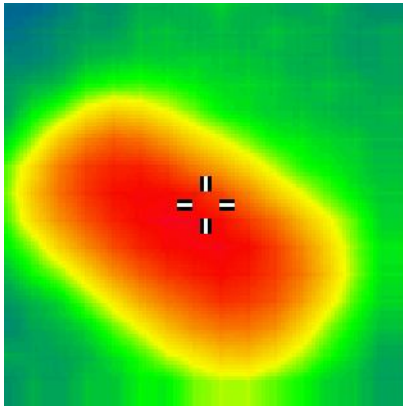
Snapshot

Date	2nd October 2012
Time	20.47

Comment

--

Thermal Snapshot



Thermal and Visible Blend



Visible Image



Temperature Measurements

Cursor 1	90.4 °F
----------	---------

Measurement Parameters

Emissivity:	0.95
Reflected Temp:	67.9 °F
Measured Load	
Rated Load	
Load %	

Repair Action

Action	Date	Initials
Inspected		
Repaired		
Reinspected		

Fault / Recommended Action

--

Inspection 5

Repair Priority
1 Low to 5 High

--

Operator	
Location	
Equipment	

Snapshot

Date	2nd October 2012
Time	21.20

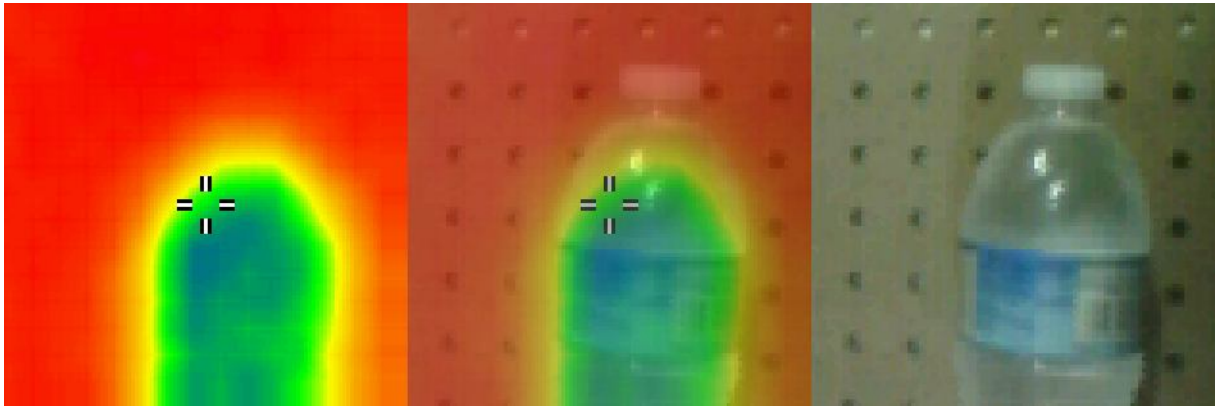
Comment

--

Thermal Snapshot

Thermal and Visible Blend

Visible Image



Temperature Measurements

Cursor 1	52.0 °F
----------	---------

Measurement Parameters

Emissivity:	0.95
Reflected Temp:	67.9 °F
Measured Load	
Rated Load	
Load %	

Repair Action

Action	Date	Initials
Inspected		
Repaired		
Reinspected		

Fault / Recommended Action

--

Inspection 6

Repair Priority
1 Low to 5 High

--

Operator	
Location	
Equipment	

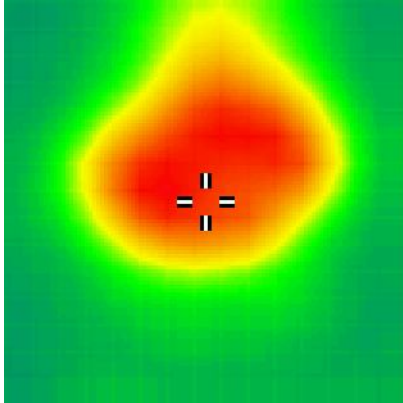
Snapshot

Date	3rd October 2012
Time	22.39

Comment

--

Thermal Snapshot



Thermal and Visible Blend



Visible Image



Temperature Measurements

Cursor 1	255.7 °F
----------	----------

Measurement Parameters

Emissivity:	0.95
Reflected Temp:	67.9 °F
Measured Load	
Rated Load	
Load %	

Repair Action

Action	Date	Initials
Inspected		
Repaired		
Reinspected		

Fault / Recommended Action

--

Inspection 7

Repair Priority
1 Low to 5 High

--

Operator	
Location	
Equipment	

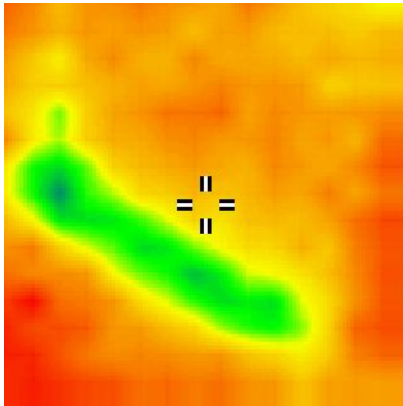
Snapshot

Date	5th October 2012
Time	13.32

Comment

--

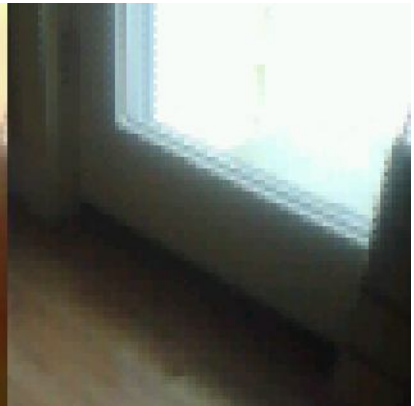
Thermal Snapshot



Thermal and Visible Blend



Visible Image



Temperature Measurements

Cursor 1	58.2 °F
----------	---------

Measurement Parameters

Emissivity:	0.95
Reflected Temp:	67.9 °F
Measured Load	
Rated Load	
Load %	

Repair Action

Action	Date	Initials
Inspected		
Repaired		
Reinspected		

Fault / Recommended Action

--

Inspection 8

Repair Priority
1 Low to 5 High

--

Operator	
Location	
Equipment	

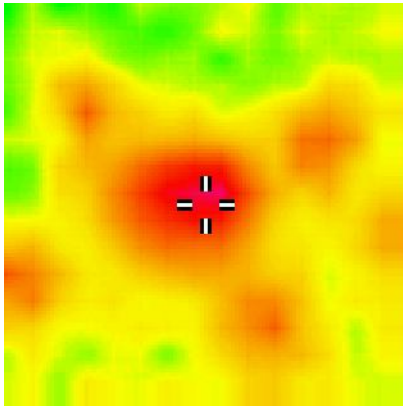
Snapshot

Date	9th October 2012
Time	22.27

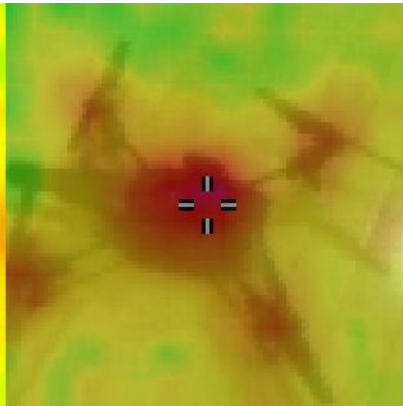
Comment

--

Thermal Snapshot



Thermal and Visible Blend



Visible Image



Temperature Measurements

Cursor 1	70.4 °F
----------	---------

Measurement Parameters

Emissivity:	0.95
Reflected Temp:	67.9 °F
Measured Load	
Rated Load	
Load %	

Repair Action

Action	Date	Initials
Inspected		
Repaired		
Reinspected		

Fault / Recommended Action

--

Inspection 9

Repair Priority
1 Low to 5 High

--

Operator	
Location	
Equipment	

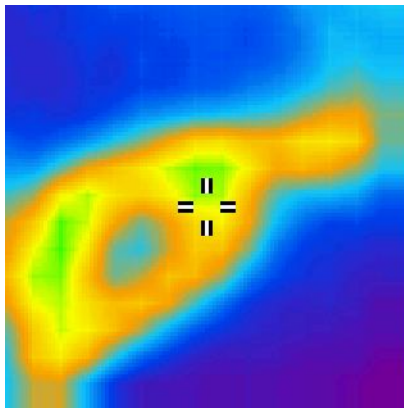
Snapshot

Date	13th October 2012
Time	13.54

Comment

--

Thermal Snapshot



Thermal and Visible Blend



Visible Image



Temperature Measurements

Cursor 1	89.8 °F
----------	---------

Measurement Parameters

Emissivity:	0.95
Reflected Temp:	67.9 °F
Measured Load	
Rated Load	
Load %	

Repair Action

Action	Date	Initials
Inspected		
Repaired		
Reinspected		

Fault / Recommended Action

--

--

Operator	
Location	
Equipment	

Snapshot

Date	13th October 2012
Time	13.57

Comment

--

Thermal Snapshot

Thermal and Visible Blend

Visible Image



Temperature Measurements

Cursor 1	124.0 °F
----------	----------

Measurement Parameters

Emissivity:	0.95
Reflected Temp:	67.9 °F
Measured Load	
Rated Load	
Load %	

Repair Action

Action	Date	Initials
Inspected		
Repaired		
Reinspected		

Fault / Recommended Action

--

--

Operator	
Location	
Equipment	

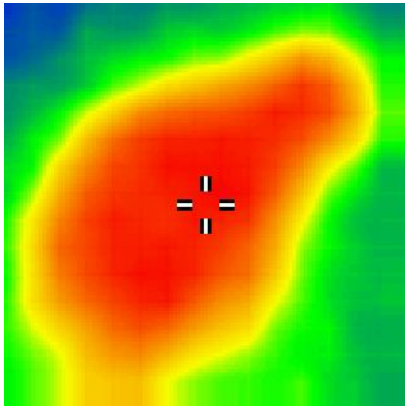
Snapshot

Date	13th October 2012
Time	14.03

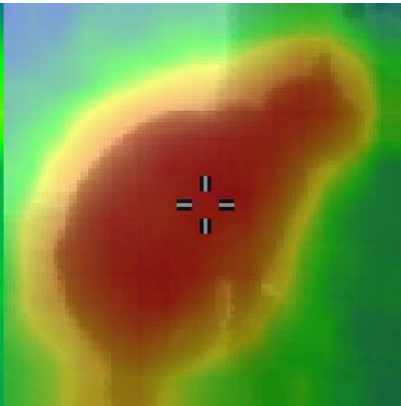
Comment

--

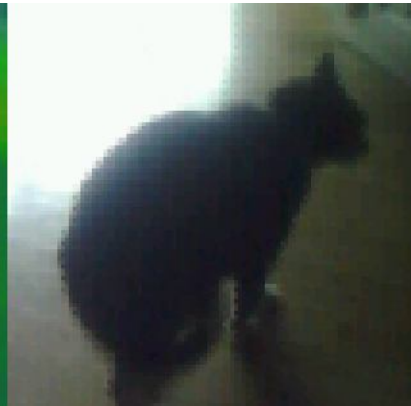
Thermal Snapshot



Thermal and Visible Blend



Visible Image



Temperature Measurements

Cursor 1	78.3 °F
----------	---------

Measurement Parameters

Emissivity:	0.95
Reflected Temp:	67.9 °F
Measured Load	
Rated Load	
Load %	

Repair Action

Action	Date	Initials
Inspected		
Repaired		
Reinspected		

Fault / Recommended Action

--

--

Operator	
Location	
Equipment	

Snapshot

Date	15th October 2012
Time	16.21

Comment

--

Thermal Snapshot

Thermal and Visible Blend

Visible Image



Temperature Measurements

Cursor 1	64.3 °F
----------	---------

Measurement Parameters

Emissivity:	0.95
Reflected Temp:	67.9 °F
Measured Load	
Rated Load	
Load %	

Repair Action

Action	Date	Initials
Inspected		
Repaired		
Reinspected		

Fault / Recommended Action

--

Summary

Insp. No.	Location	Equipment	Fault /Action	Priority
1				
2				
3				
4				
5				
6				
7				
8				
9				
10				
11				
12				